

# LED Lighting Catalogue

LED Driver **2022**



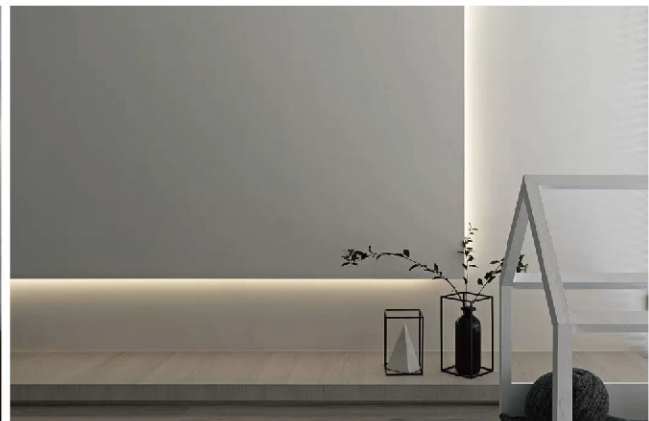
**ERIK C**<sup>®</sup>  
concepts

# LED Driver



## Constant Voltage Conventional

- Input voltage: AC220-240Vac
- Output voltage: 12V/24V
- Can be used for lighting products or equipment power supply.
- Overload protection, over temperature protection, and short circuit protection
- 2-year warranty
- Customized services can be provided according to your needs



\* Applicable to LED strip light, LED module, LED mirror light, LED furniture light, etc

Item No.	Input Volatge (V)	Power (W)	Output Volatge (V)	Output Current (A)	PF	Material	Lifetime (H)	L . W . H (mm)
KST1311-6W	220-240	6	12/24	0.5/0.25	≥0.7	PC	20000	90*40*24
KST1311-12W	220-240	12	12/24	1/0.5	≥0.7	PC	20000	90*40*24
KST1311-18W	220-240	18	12/24	1.5/0.75	≥0.7	PC	20000	120*42*20
KST1311-24W	220-240	24	12/24	2/1	≥0.7	PC	20000	147*48*24
KST1311-36W	220-240	36	12/24	3/1.5	≥0.9	PC	20000	133*42*30
KST1311-60W	220-240	60	12/24	5/2.5	≥0.9	PC	20000	185*64*22
KST1311-100W	220-240	100	12/24	8.3/4.1	≥0.9	PC	20000	180*66*32
KST1311-150W	220-240	150	12/24	12.5/6.2	≥0.9	PC	20000	205*71*35

# LED Driver



## Constant Voltage Ultra-thin

- Input voltage: AC220-240Vac
- Output voltage: 12V/24V
- Can be used for lighting products or equipment power supply.
- Overload protection, over temperature protection, and short circuit protection
- 2-year warranty
- Customized services can be provided according to your needs



\* Applicable to LED strip light, LED module, LED mirror light, LED furniture light, etc

Item No.	Input Volatge (V)	Power (W)	Output Volatge (V)	Output Current (A)	PF	Material	Lifetime (H)	L . W . H (mm)
KST1321-15W	220-240	15	12/24	1.25/0.625	≥0.7	PC	20000	103*35.5*16.5
KST1321-18W	220-240	18	12/24	1.5/0.75	≥0.7	PC	20000	103*35.5*16.5
KST1321-24W	220-240	24	12/24	2/1	≥0.7	PC	20000	160*58*18
KST1321-30W	220-240	30	12/24	2.5/1.25	≥0.9	PC	20000	160*58*18
KST1321-36W	220-240	36	12/24	3/1.5	≥0.9	PC	20000	160*58*18
KST1321-50W	220-240	50	12/24	4.16/2.08	≥0.9	PC	20000	160*58*18
KST1321-75W	220-240	75	12/24	6.25/3.125	≥0.9	PC	20000	160*58*18
KST1321-100W	220-240	100	12/24	8.33/4.16	≥0.9	PC	20000	160*58*18

# LED Driver



## Constant Voltage Slim

- Input voltage: AC220-240Vac
- Output voltage: 12V/24V
- Can be used for lighting products or equipment power supply.
- Overload protection, over temperature protection, and short circuit protection
- 2-year warranty
- Customized services can be provided according to your needs



\* Applicable to LED strip light, LED module, LED mirror light, LED furniture light, etc

Item No.	Input Volatge (V)	Power (W)	Output Volatge (V)	Output Current (A)	PF	Material	Lifetime (H)	L . W . H (mm)
KST1331-12W	220-240	12	12/24	1/0.5	≥0.7	PC	20000	160*30*16
KST1331-18W	220-240	18	12/24	1.5/0.75	≥0.7	PC	20000	160*30*16
KST1331-24W	220-240	24	12/24	2/1	≥0.7	PC	20000	251*30*17
KST1331-30W	220-240	30	12/24	2.5/1.25	≥0.9	PC	20000	251*30*17
KST1331-36W	220-240	36	12/24	3/1.5	≥0.9	PC	20000	251*30*17
KST1331-60W	220-240	60	12/24	5/2.5	≥0.9	PC	20000	320*30*19
KST1331-75W	220-240	75	12/24	6.25/3.125	≥0.9	PC	20000	320*30*19
KST1331-100W	220-240	100	12/24	8.33/4.16	≥0.9	PC	20000	320*30*19

# LED Driver



## Honeycomb Ultra-thin

- Input voltage: AC100-240Vac
- Output voltage: 12V/24V
- High efficiency : more than 85%@230Vac input
- No load power consumption<0.5W
- Ultra slim size 30mm and 1U low profile
- IEC/EN61558-1,-2-16 standard and CE certificated
- Protections: Short circuit / Overload / Over voltage/Over temperature
- 100% full load burn-in test
- 3-year warranty and high reliability



\* Applicable to LED lamp, LED module, Medical Equipment, etc

Item No.	Input Volatge (V)	Power (W)	Output Volatge (V)	Output Current (A)	PF	Material	Lifetime (H)	L . W . H (mm)
KST1151-36W3	100-240	36	12/24	3/1.5	≥0.5	ALU	30000	99*82*30
KST1151-50W3	100-240	50	12/24	4.16/2.08	≥0.5	ALU	30000	99*82*30
KST1151-75W3	100-240	75	12/24	6.25/3.12	≥0.5	ALU	30000	100*97*30
KST1151-100W3	100-240	100	12/24	8.33/4.16	≥0.5	ALU	30000	129*97*30
KST1151-150W3	100-240	150	12/24	12.5/6.25	≥0.5	ALU	30000	159*97*30
KST1151-200W3	100-240	200	12/24	16.67/8.33	≥0.5	ALU	30000	259*115*30
KST1151-350W3	100-240	350	12/24	29.16/14.58	≥0.5	ALU	30000	259*115*30

# LED Driver



## Outdoor Constant Voltage

- Product conversion efficiency up to 93%
- Wide voltage input 100-277Vac, THD less than 15%
- Output voltage can be adjusted by potentiometer, convenient for stocking
- Lightning protection: 6KV line to line, 8KV line to ground
- All-round protection: over temperature protection, over voltage protection, short circuit protection and waterproof protection (IP67)
- Output without strobe, strobe coefficient  $\leq 0.5\%$
- 5-year warranty and high reliability



\* Applicable to outdoor light, Billboard, etc

Item No.	Input Volatge (V)	Power (W)	Output Volatge (V)	Output Current (A)	PF	Material	Lifetime (H)	L . W . H (mm)
KST3612C-150W	100-277	150	12/24	1.8/4.2	$\geq 0.95$	ALU	50000	169.4*70*37
KST3612C-200W	100-277	200	12/24	16.67/8.34	$\geq 0.95$	ALU	50000	227*61*34

# LED Driver



## Outdoor Constant Current

- Universal AC input/full range
- DC output 27-56V
- High efficiency: more than 90%@230Vac input
- No load power consumption<0.5W
- Protections: Short circuit / Overload / Over voltage/Over temperature
- 100% full load burn-in test
- 5-year warranty and high reliability



\* Applicable to outdoor light, Billboard, etc

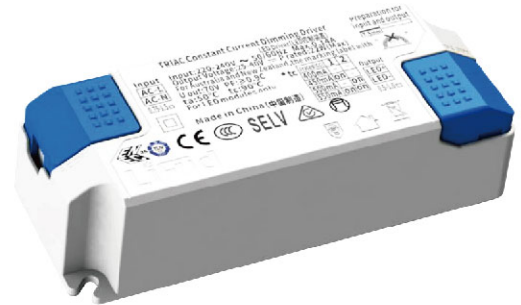
Item No.	Input Volatge (V)	Power (W)	Output Volatge (V)	Output Current (A)	PF	Material	Lifetime (H)	L . W . H (mm)
KST4712C-100W	100-277	100	27-56	1.5-3	≥0.95	ALU	50000	190*70*37
KST4712C-150W	100-277	150	27-56	1.8-4.2	≥0.95	ALU	50000	190*70*37
KST4712C-200W	100-277	200	27-56	3-5.5	≥0.95	ALU	50000	228*70*37

# LED Driver



## Triac Dimming

- Input voltage: AC220-240V
- Output: output current can be adjusted by dialing code (400-550mA)
- Support European mainstream post-cut dimmers
- Dimming range: 5%-100%
- Overload protection, over-voltage protection and short circuit protection
- Smooth dimming curve, no flicker
- 5-year warranty and high reliability



\* Applicable to LED strip light, LED module, LED mirror light, LED furniture light, etc

Item No.	Input Volatge (V)	Power (W)	Output Volatge (V)	Output Current (A)	PF	Material	Lifetime (H)	L . W . H (mm)
KSD1412C-20W	220-240	20	25-40	0.4-0.55	≥0.9	PC	50000	116.9*46*31
KSD1412C-30W	220-240	30	25-40	0.55-0.7	≥0.9	PC	50000	116.9*46*31



# LED Driver



## 1-10V Dimming

- Isolation type 1-10V/10V PWM/Rx, with isolated dimming interface
- 10-position current output through external dial code
- Soft dimming, no strobe
- HPC patent technology is adopted: under any dimming level, the brightness between lamps stay consistent
- Standby power consumption <0.5W
- High power factor, high efficiency, low harmonics
- Screw-free press-on crimp end caps for easy installation
- Separate input and output crimp end caps for secure crimping
- 0.75-1.5mm<sup>2</sup> cable, solid wiring
- SELV and Class II design, suitable for use beside the luminaire
- 5-year warranty and high reliability



\* Applicable to LED strip light, LED module, LED mirror light, LED furniture light, etc

Item No.	Input Volatge (V)	Power (W)	Output Volatge (V)	Output Current (mA)	PF	Material	Lifetime (H)	L . W . H (mm)
KSD2433C-10W	220-240	3-10	24-42	100-350	≥0.9	PC	50000	117*45.5*24
KSD2433C-30W	220-240	10-30	24-42	225-600	≥0.9	PC	50000	117*45.5*29
KSD2413C-30W	220-240	10-30	24-42	350-800	≥0.9	PC	50000	103*68.5*31
KSD2413C-40W	220-240	10-40	24-42	600-1050	≥0.9	PC	50000	103*68.5*31

# LED Driver



## DALI Dimming

- Supports DALI-2+pushDIM dimming
- 16-position current output through external dial code
- Soft dimming and no strobe at any brightness
- HPC patent technology is adopted: under any dimming level, the brightness between lamps stay consistent
- Dimming range:1%~100%; output current accuracy: 2%
- Standby power consumption <0.5W
- High power factor, high efficiency, low harmonics
- Screw-free crimp end cover design for easy installation
- SELV and Class II design, suitable for use beside the luminaire
- 5-year warranty and high reliability



\* Applicable to LED strip light, LED module, LED mirror light, LED furniture light, etc

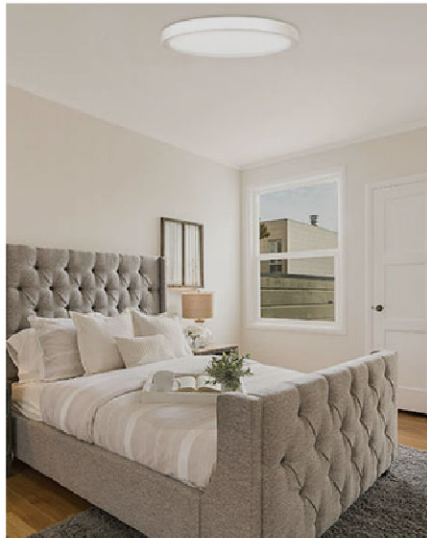
Item No.	Input Volatge (V)	Power (W)	Output Volatge (V)	Output Current (mA)	PF	Material	Lifetime (H)	L . W . H (mm)
KSD3433C-10W	220-240	3-10	6-42	100-350	≥0.9	PC	50000	117*45.5*24
KSD3433C-30W	220-240	10-30	6-42	225-600	≥0.9	PC	50000	117*45.5*29
KSD3433C-30W	220-240	10-30	6-42	250-750	≥0.9	PC	50000	117*45.5*29
KSD3413C-30W	220-240	10-30	6-42	250-800	≥0.9	PC	50000	103*68.5*31
KSD3413C-40W	220-240	10-40	6-84	250-800	≥0.9	PC	50000	103*68.5*31
KSD3413C-45W	220-240	18-45	6-42	450-1100	≥0.9	PC	5000	103*68.5*31

# LED Driver



## Smart Dimming

- Tuya smart single / 2 way power supply
- Dimming soft and no strobe at any brightness
- Dimming range 10%~100%, output current accuracy 3%
- Standby power consumption <0.5W
- High power factor, high efficiency, low harmonics
- No screw press type crimp end cover design, easy installation
- Separate crimp end caps for input and output, firmly crimped
- 0.75-1.5mm<sup>2</sup> cable, solid wiring
- SELV and Class II design, suitable for use beside the luminaire
- 3-year warranty and high reliability



\* Applicable to LED strip light, LED module, LED mirror light, LED furniture light, etc

Item No.	Input Volatge (V)	Power (W)	Output Volatge (V)	Output Current (A)	PF	Material	Lifetime (H)	L . W . H (mm)
ST-KSD4410C	220-240	20	27-42	0.5	≥0.9	PC	30000	125*40*27
ST-KSD4410C	220-240	20	27-42	0.5	≥0.9	PC	30000	125*40*27
ST-KSD4410C	220-240	40	27-42	1	≥0.9	PC	30000	139*43*29
ST-KSD4410C	220-240	40	27-42	1	≥0.9	PC	30000	139*43*29

# LED Driver

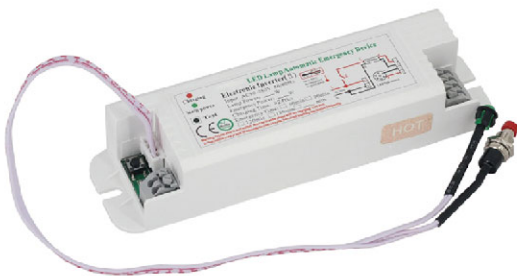


## Emergency Device

- Suitable for all LED lamps, including LED fluorescent lamps, LED downlights and other emergency lighting.
- Full power emergency lighting.
- International circuit, tri-color indicator, detection button.
- No-load protection, constant current and voltage limiting charging.
- Self-test function/fault alarm function.



Item No.	Input Volatge (V)	Power (W)	Output Volatge (V)	Material	Lifetime (H)	L . W . H (mm)
KST1311C-10W	100-277	1~9	100-277	PC	20000	150*40*30
KST1311C-18W	100-265	8~18	100-265	PC	20000	168*38*28
KST1311C-36W	100-277	18~36	100-277	PC	20000	168*38*28
KST1311C-50W	100-277	30~50	100-277	PC	20000	390*120*75
KST1311C-80W	100-277	50~80	100-277	PC	20000	390*120*75



## Emergency Device

- Intelligent emergency power supply, automatically matching LED lamps.
- Suitable for LED panel lights, downlights and other reduced power emergency lighting.
- External drive power supply for LED lamps and lanterns.
- Does not affect the lighting of the luminaire when power is available, reduced power emergency lighting after power failure.
- International circuit, three-colour indicator, detection button.
- No-load protection, constant current and voltage limiting charging



Item No.	Input Volatge (V)	Power (W)	Output Volatge (V)	Material	Lifetime (H)	L . W . H (mm)
KST1312C-60W	100-265	10~60	18-120	PC	20000	150*36*28
KST1312C-80W	100-265	10~80	18-120	PC	20000	150*40*30
KST1312C-200W	100-265	20~200	18-120	PC	20000	168*38*28

# LED Driver



## Honeycomb Slim

- Input voltage: 24-120W 100-265V 150-500W 220-240V
- Output voltage: 12V/24V
- Can be used for lighting, medical equipment, monitoring equipment, etc.
- Overload protection & short circuit protection
- 2-year warranty
- Customized services can be provided according to your needs



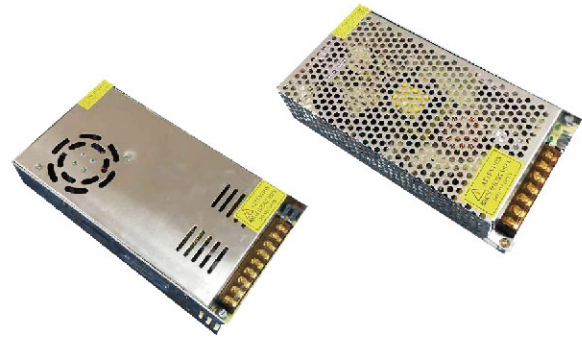
Item No.	Input Volatge (V)	Power (W)	Output Volatge (V)	Output Current (A)	PF	Material	Lifetime (H)	L . W . H (mm)
KST1125-24W	100-265	24	12/24	2/1	≥0.5	ALU	20000	100*30*20
KST1125-36W	100-265	36	12/24	3/1.5	≥0.5	ALU	20000	100*30*20
KST1125-60W	100-265	60	12/24	5/2.5	≥0.5	ALU	20000	160*40*31
KST1125-100W	100-265	100	12/24	8.3/4.1	≥0.5	ALU	20000	188*46*35
KST1125-120W	100-265	120	12/24	10/5	≥0.5	ALU	20000	188*46*35
KST1125-150W	220-240	150	12/24	12.5/6.25	≥0.5	ALU	20000	213*60*40
KST1125-200W	220-240	200	12/24	16.5/8.3	≥0.5	ALU	20000	223*68*40
KST1125-250W	220-240	250	12/24	20/10	≥0.5	ALU	20000	223*68*40
KST1125-360W	220-240	360	12/24	30/15	≥0.5	ALU	20000	223*69*40
KST1125-360W	220-240	360	12/24	30/15	≥0.5	ALU	20000	223*69*40
KST1125-500W	220-240	500	12/24	41/21	≥0.5	ALU	20000	223*69*40

# LED Driver



## Honeycomb Square

- Input voltage: 24-120W 100-265V 150-500W 220-240V
- Output voltage: 12V/24V
- Full power
- Can be used for lighting, medical equipment, monitoring equipment, etc.
- Overload protection & short circuit protection
- 2-year warranty
- Customized services can be provided according to your needs



Item No.	Input Volatge (V)	Power (W)	Output Volatge (V)	Output Current (A)	PF	Material	Lifetime (H)	L . W . H (mm)
KST1115-12W	100-265	12	12/24	1/0.5	≥0.5	ALU	20000	70*39*31
KST1115-25W	100-265	25	12/24	2/1	≥0.5	ALU	20000	85*58*33
KST1115-30W	100-265	30	12/24	2.5/1.25	≥0.5	ALU	20000	85*58*33
KST1115-40W	100-265	40	12/24	3.3/1.6	≥0.5	ALU	20000	85*58*33
KST1115-50W	100-265	50	12/24	4.16/2.08	≥0.5	ALU	20000	110*78*35
KST1115-60W	100-265	60	12/24	5/2.5	≥0.5	ALU	20000	110*78*35
KST1115-100W	100-265	100	12/24	8.3/4.1	≥0.5	ALU	20000	159*98*42
KST1115-120W	100-265	120	12/24	10/5	≥0.5	ALU	20000	159*98*42
KST1115-150W	220-240	150	12/24	12.5/6.25	≥0.5	ALU	20000	199*98*42
KST1115-200W	220-240	200	12/24	16.7/8.33	≥0.5	ALU	20000	199*98*42
KST1115-250W	220-240	250	12/24	20.83/10.41	≥0.5	ALU	20000	200*110*50
KST1115-300W	220-240	300	12/24	25/12.5	≥0.5	ALU	20000	200*110*50
KST1115-360W	220-240	360	12/24	30/15	≥0.5	ALU	20000	215*115*52
KST1115-400W	220-240	400	12/24	33.3/16.7	≥0.5	ALU	20000	215*115*52
KST1115-500W	220-240	500	12/24	40/20	≥0.5	ALU	20000	222*114*58

# LED Driver



## Honeycomb Square

- Input voltage: 220-240V
- Output voltage: 12V/24V
- Widely used in LED light strip, light string, etc.
- Overload protection & short circuit protection
- 2-year warranty
- Customized services can be provided according to your needs



\* Applicable to advertising light box

Item No.	Input Volatge (V)	Power (W)	Output Volatge (V)	Output Current (A)	PF	Material	Lifetime (H)	L . W . H (mm)
KST1137-60W	220-240	60	12/24	5/2.5	≥0.5	ALU	20000	145*52*22
KST1137-100W	220-240	100	12/24	8.33/4.17	≥0.5	ALU	20000	168*52*22
KST1137-150W	220-240	150	12/24	12.5/6.25	≥0.5	ALU	20000	235*52*22
KST1137-200W	220-240	200	12/24	16.7/8.33	≥0.5	ALU	20000	308*52*22
KST1137-300W	220-240	300	12/24	25/12.5	≥0.5	ALU	20000	308*52*22
KST1137-400W	220-240	400	12/24	33.3/16.7	≥0.5	ALU	20000	378*52*22

# LED Driver



## 0-10V Dimming

- Input voltage: 220-240V
- Output voltage: 12V
- Function: 0-10V dimming
- Dimming range: 10%-100%
- Cost-effective
- 2-year warranty
- Customized services can be provided according to your needs



\* Applicable to LED strip light, LED module, LED furniture light, etc

Item No.	Input Volatge (V)	Power (W)	Output Volatge (V)	Output Current (A)	PF	Material	Lifetime (H)	L . W . H (mm)
KSD2134L-60W	220-240	60	12	5	≥0.5	ALU	20000	190*50*30
KSD2134L-100W	220-240	100	12	8.33	≥0.5	ALU	20000	230*50*30
KSD2134L-150W	220-240	150	12	12.5	≥0.5	ALU	20000	287*50*30
KSD2134L-200W	220-240	200	12	16.67	≥0.5	ALU	20000	287*50*30
KSD2134L-250W	220-240	250	12	20.83	≥0.5	ALU	20000	287*50*30



# LED Driver



## Outdoor Waterproof

- Input voltage: 30-150W 100-265V 150-360W 220-240V
- Output voltage: 12V/24V
- Full power
- Suitable for outdoor lighting
- Overload protection & short circuit protection
- 2-year warranty
- Customized services can be provided according to your needs



\* Applicable to outdoor lighting

Item No.	Input Volatge (V)	Power (W)	Output Volatge (V)	Output Current (A)	PF	Material	Lifetime (H)	L . W . H (mm)
KST3625-30W	100-265	30	12/24	2.5/1.25	≥0.5	ALU	20000	130*30*20
KST3625-50W	100-265	50	12/24	4.16/2.08	≥0.5	ALU	20000	160*30*20
KST3625-80W	100-265	80	12/24	6.66/3.33	≥0.5	ALU	20000	180*50*24
KST3625-100W	100-265	100	12/24	8.33/4.16	≥0.5	ALU	20000	195*50*24
KST3625-120W	100-265	120	12/24	10/5	≥0.5	ALU	20000	190*50*24
KST3625-150W	100-265	150	12/24	12.5/6.25	≥0.5	ALU	20000	225*50*24
KST3625-200W	220-240	200	12/24	16.67/8.33	≥0.5	ALU	20000	225*50*24
KST3625-250W	220-240	250	12/24	20.83/10.41	≥0.5	ALU	20000	225*50*24
KST3625-300W	220-240	300	12/24	25/12.5	≥0.5	ALU	20000	255*65*28
KST3625-360W	220-240	360	12/24	30/15	≥0.5	ALU	20000	255*65*28

# LED Driver



## Smart Dimming

- Wide input voltage: 100-240V
- Output voltage: 36-72V
- Highly cost-effective
- Efficiency > 85%
- Tuya APP WiFi 2 way dimming and color mixing
- Wide application: can be used for bracket lights, small panel lights, spotlights, ceiling lights and other kinds of lamps, can be built-in and external
- 2-year warranty
- Customized services can be provided according to your needs



\* Applicable to LED bracket light, panel light, spot light, ceiling light, etc

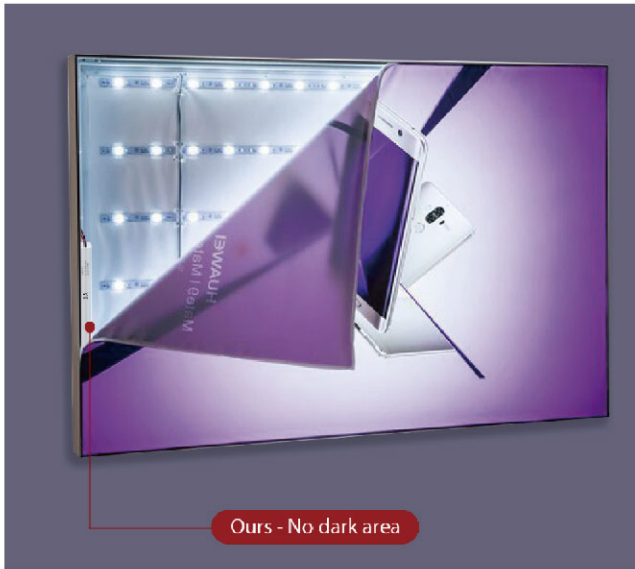
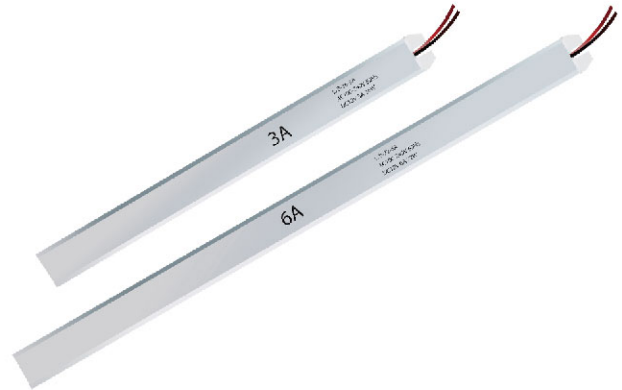
Item No.	Input Volatge (V)	Power (W)	Output Volatge (V)	Output Current (A)	PF	Material	Lifetime (H)	L . W . H (mm)
ST-KSD453W1	100-240	24	36-72	0.3	≥0.5	PC	20000	110*40*25
ST-KSD453W1	100-240	36	36-72	0.45	≥0.5	PC	20000	110*40*25

# LED Driver



## Slender Light Box Special

- Wide input voltage: 100-240V
- Output voltage: 12V/24V
- Easy to install, can be used for ultra-thin light box.
- Short circuit protection & overload protection.
- 18W-60W is full power, 72W and 100W is also full power initially, steady state will drop power due to over temperature protection.
- 2-year warranty
- Customized services can be provided according to your needs



Item No.	Input Volatge (V)	Power (W)	Output Volatge (V)	Output Current (A)	PF	Material	Lifetime (H)	L . W . H (mm)
KST133-18W3	220-240	18	12/24	1.5/0.75	≥0.5	ALU	20000	170*18*17
KST133-24W3	220-240	24	12/24	2/1	≥0.5	ALU	20000	170*18*17
KST133-36W3	220-240	36	12/24	3/1.5	≥0.5	ALU	20000	260*18*17
KST133-48W3	220-240	48	12/24	4/2	≥0.5	ALU	20000	260*18*17
KST133-60W3	220-240	60	12/24	5/2.5	≥0.5	ALU	20000	290*18*17
KST133-72W3	220-240	72	12/24	6/3	≥0.5	ALU	20000	345*18*17
KST133-100W3	220-240	100	12/24	8.5/4.2	≥0.5	ALU	20000	368*18*17